

UNSHIELDED SMD POWER INDUCTORS / FPI TYPE

FEATURES

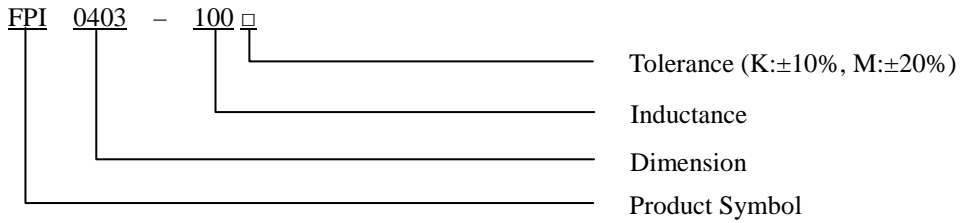
- ◆ Silver Plated Type
- ◆ High power and high saturation
- ◆ Ideal inductors for DC/DC conversion



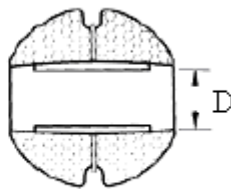
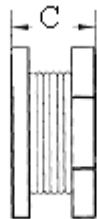
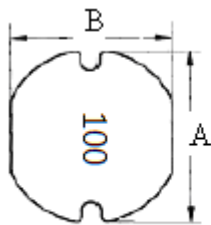
APPLICATIONS

- ◆ Power supply for VTRs.
- ◆ Portable communication equipment.
- ◆ Notebook PCs.
- ◆ LCD televisions.
- ◆ DC/DC converters, etc.

ORDERING CODE



DIMENSIONS (UNIT: mm)



A	4.5 ± 0.3	m/m
B	4.0 ± 0.3	m/m
C	3.2 ± 0.3	m/m
D	1.3 (REF)	m/m

UNSHIELDED SMD POWER INDUCTORS / FPI TYPE

ELECTRICAL CHARACTERISTICS FOR FPI0403

Part No.	Inductance (uH)	RDC (Ω)	IDC (A)
FPI0403-1R0 □	1.0	0.049	4.50
FPI0403-2R2 □	2.2	0.065	3.70
FPI0403-3R3 □	3.3	0.087	3.00
FPI0403-4R7 □	4.7	0.094	2.40
FPI0403-5R6 □	5.6	0.150	2.20
FPI0403-6R8 □	6.8	0.160	1.90
FPI0403-8R2 □	8.2	0.170	1.80
FPI0403-100 □	10	0.182	1.50
FPI0403-120 □	12	0.210	1.40
FPI0403-150 □	15	0.235	1.30
FPI0403-180 □	18	0.340	1.20
FPI0403-220 □	22	0.450	1.00
FPI0403-270 □	27	0.520	0.90
FPI0403-330 □	33	0.600	0.85
FPI0403-390 □	39	0.680	0.80
FPI0403-470 □	47	0.770	0.70
FPI0403-560 □	56	0.830	0.58
FPI0403-680 □	68	1.030	0.55
FPI0403-820 □	82	1.220	0.50
FPI0403-101 □	100	1.340	0.48
FPI0403-121 □	120	1.460	0.45
FPI0403-151 □	150	1.850	0.40
FPI0403-181 □	180	2.180	0.35
FPI0403-221 □	220	3.530	0.33
FPI0403-271 □	270	3.840	0.30
FPI0403-331 □	330	4.200	0.25
FPI0403-391 □	390	4.300	0.23
FPI0403-471 □	470	7.000	0.20
FPI0403-561 □	560	8.500	0.18
FPI0403-102 □	1000	15.000	0.16

* 100uH 以上 Test Frequency : 1KHZ/1V

* 100uH 以下 Test Frequency : 2.52MHZ/1V

CORE MASTER ENTERPRISE CO., LTD.



<http://www.coremaster.com.tw>